

CT.	DIM. 'A'	DIM. 'B'	DIM. 'X'						
06	.200 (5.08)	.500 (12.70)	.130 (3.30)						
08	.300 (7.62)	.600 (15.24)	.130 (3.30)						
10	.400 (10.16)	.700 (17.78)	.174 (4.42)						
12	.500 (12.70)	.800 (20.32)	.174 (4.42)						
14	.600 (15.24)	.900 (22.86)	.174 (4.42)						
16	.700 (17.78)	1.000 (25.40)	.174 (4.42)						
18	.800 (20.32)	1.100 (27.94)	.174 (4.42)						
20	.900 (22.86)	1.200 (30.48)	.174 (4.42)						
22	1.000 (25.40)	1.300 (33.02)	.174 (4.42)						
24	1.100 (27.94)	1.400 (35.56)	.174 (4.42)						
26	1.200 (30.48)	1.500 (38.10)	.174 (4.42)						
28	1.300 (33.02)	1.600 (40.64)	.174 (4.42)						
30	1.400 (35.56)	1.700 (43.18)	.174 (4.42)						
32	1.500 (38.10)	1.800 (45.72)	.174 (4.42)						
34	1.600 (40.64)	1.900 (48.26)	.174 (4.42)						
36	1.700 (43.18)	2.000 (50.80)	.174 (4.42)						
38	1.800 (45.72)	2.100 (53.34)	.174 (4.42)						
40	1.900 (48.26)	2.200 (55.88)	.174 (4.42)						
42	2.000 (50.80)	2.300 (58.42)	.174 (4.42)						
44	2.100 (53.34)	2.400 (60.96)	.174 (4.42)						
46	2.200 (55.88)	2.500 (63.50)	.174 (4.42)						
48	2.300 (58.42)	2.600 (66.04)	.174 (4.42)						
50	2.400 (60.96)	2.700 (68.58)	.174 (4.42)						
52	2.500 (63.50)	2.800 (71.12)	.174 (4.42)						
54	2.600 (66.04)	2.900 (73.66)	.174 (4.42)						
56	2.700 (68.58)	3.000 (76.20)	.174 (4.42)						
58	2.800 (71.12)	3.100 (78.74)	.174 (4.42)						
60	2.900 (73.66)	3.200 (81.28)	.174 (4.42)						
62	3.000 (76.20)	3.300 (83.82)	.174 (4.42)						
64	3.100 (78.74)	3.400 (86.36)	.174 (4.42)						
66	3.200 (81.28)	3.500 (88.90)	.174 (4.42)						
68	3.300 (83.82)	3.600 (91.44)	.174 (4.42)						
70	3.400 (86.36)	3.700 (93.98)	.174 (4.42)						
72	3.500 (88.90)	3.800 (96.52)	.174 (4.42)						

K	LEAD FREE LFC2004-1778 FINISH 94/04/26
J2	TAB DIM 6 & 8 ECN #121899-0145 EMORGAN 98/08/26
J1	REVISED PER ECR #174529 MORRISON 97/6/6
J	3 PGS WAS 2 ADD OPTIONAL B USES 2/29/93 MURPHY
I	CHANGED NOTE #4 PER ECR NO US1957 09-0-91 BUS
HI	ADDED SERIES PER US8351 01/26/93 MCB
H	CHANGED MATERIAL PER ECR NO US30747 01/26/93 RB
G	REVISED & REDRAWN PER US1031 92/07/00 RB
F	
E	
D	
C	
B	
A	

## OPTION A ASSEMBLY

SEE SHEET 2 FOR OPTION B ASSEMBLY WITH DRAIN HOLES

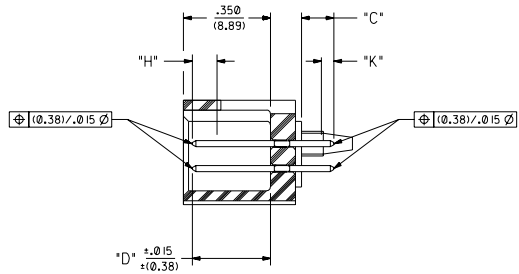
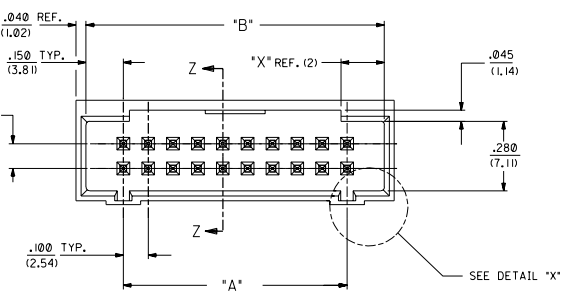
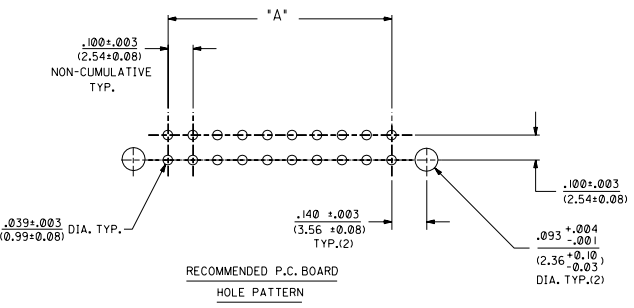
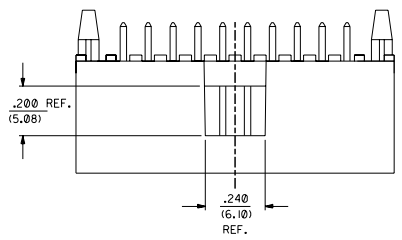
DIMENSIONS SHOWN METRIC INCH		REVISE ONLY ON CAD SYSTEM	
TITLE		REVISED	
SALES ASSEMBLY		WAFER - VERT. MT - FULLY SHROUDED .280 POCKET WITH .150 END WALLS .100 GRID W/PGS & .025 SQ./RD. PINS	
MOLEX INCORPORATED		PART NO. SDA-70227-001	
SEE CHART		SDA-70227-001	
SCALE 4:1		DATE 9/2/93	

### NOTES:

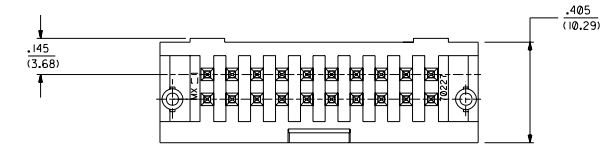
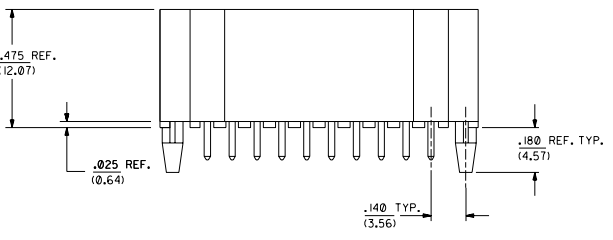
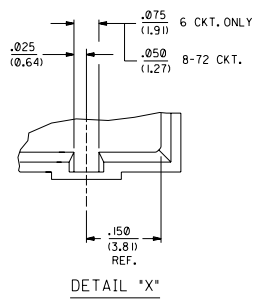
- 1- 20 CIRCUIT SIZE SHOWN FOR ILLUSTRATION PURPOSES.
- 2- PIN PUSHOUT FORCE (17.79N)/4 LBS. MIN.
- 3- PINS MUST MEET SOLDERABILITY SPEC. MIL-STD-202, METHOD 208B.
- 4- THIS PART CONFORMS TO MOLEX PRODUCT SPEC. NO. 70227 AND 70229.

### MATERIAL:

SHROUDED WAFER: G.F. POLYESTER, COLOR: BLACK, 94V-0.  
PINS: PHOS, BRONZE 510  
SEE SHEET 2 FOR FINISHES.



### SECTION Z-Z



ENGINEERING NUMBER A-70227	C .010 (0.25)	D .015 (0.38)	PLATING TYPE	CONNECTOR END PLATING			P.C. BOARD END PLATING			PACKAGING INFORMATION PK-70873-	PLATING: TIN .000150 MINIMUM TIN OVER .000050 MINIMUM NICKEL PLATE.
				TYPE	H MEAS.	TYPE	K MEAS.	TYPE	K MEAS.		
-3001/-3034			15 GOLD	GOLD	.130 (3.30)	.315 (8.00)	TIN	.050 (1.27)	-0018	15 GOLD .000015 MINIMUM NICKEL PLATE IN SELECTED AREA AND .000075 MINIMUM TIN IN SELECTED AREA OVER .000050 MINIMUM NICKEL OVER-ALL.  30 GOLD .000030 MINIMUM GOLD PLATE IN SELECTED AREA AND .000075 MINIMUM TIN IN SELECTED AREA OVER .000050 MINIMUM NICKEL OVER-ALL.  *THE PRIMARY SHIPPING CARTON WILL BE LABELED "COMPLIANT TO ROHS DIRECTIVE 2002/95/EC AND ELV ANNEX II OF DIRECTIVE 2000/53/EC". CARTONS WITHOUT THIS LABEL MAY CONTAIN PRODUCT WITH LEAD.	
-3035/-3068			TIN	TIN	.130 (3.30)	.315 (8.00)	TIN	.050 (1.27)	-0018		
-3068/-3102			15 GOLD	GOLD	.080 (2.03)	.315 (8.00)	TIN	.050 (1.27)	-0018		
-3103/-3136			15 GOLD	GOLD	.100 (2.54)	.240 (6.10)	TIN	.050 (1.27)	-0018		
-3137/-3170			30 GOLD	GOLD	.130 (3.30)	.315 (8.00)	TIN	.050 (1.27)	-0018		

NO. OF CKTS	OPTION A ASSEMBLY 15 GOLD (SHEET 1 GEOMETRY)		OPTION A ASSEMBLY TIN (SHEET 1 GEOMETRY)		OPTION A ASSEMBLY 15 GOLD (SHEET 1 GEOMETRY)		OPTION B ASSEMBLY 15 GOLD (SHEET 2 GEOMETRY)		OPTION A ASSEMBLY 30 GOLD (SHEET 1 GEOMETRY)		EDP NUMBER	ENG NUMBER	EDP NUMBER	ENG NUMBER	EDP NUMBER	ENG NUMBER	EDP NUMBER	ENG NUMBER	NO. OF CKTS
	EDP NUMBER	ENG NUMBER	EDP NUMBER	ENG NUMBER	EDP NUMBER	ENG NUMBER	EDP NUMBER	ENG NUMBER	EDP NUMBER	ENG NUMBER									
06	15-47-8063	A-70227-3001	15-47-8064	A-70227-3035	15-47-8066	A-70227-3069			AX-70227-3103	15-47-8067	A-70227-3137								06
08	15-47-8083	A-70227-3002	15-47-8084	A-70227-3036	15-47-8086	A-70227-3070			AX-70227-3104	15-47-8087	A-70227-3138								08
10	15-47-8102	A-70227-3003	15-47-8104	A-70227-3037	15-47-8106	A-70227-3071			AX-70227-3105	15-47-8107	A-70227-3139								10
12	15-47-8123	A-70227-3004	15-47-8124	A-70227-3038	15-47-8126	A-70227-3072			AX-70227-3106	15-47-8127	A-70227-3140								12
14	15-47-8143	A-70227-3005	15-47-8144	A-70227-3039	15-47-8146	A-70227-3073			AX-70227-3107	15-47-8147	A-70227-3141								14
16	15-47-8163	A-70227-3006	15-47-8164	A-70227-3040	15-47-8166	A-70227-3074			AX-70227-3108	15-47-8167	A-70227-3142								16
18	15-47-8183	A-70227-3007	15-47-8184	A-70227-3041	15-47-8186	A-70227-3075			AX-70227-3109	15-47-8187	A-70227-3143								18
20	15-47-8202	A-70227-3008	15-47-8204	A-70227-3042	15-47-8206	A-70227-3076			AX-70227-3110	15-47-8207	A-70227-3144								20
22	15-47-8223	A-70227-3009	15-47-8224	A-70227-3043	15-47-8226	A-70227-3077			AX-70227-3111	15-47-8227	A-70227-3145								22
24	15-47-8243	A-70227-3010	15-47-8244	A-70227-3044	15-47-8246	A-70227-3078			AX-70227-3112	15-47-8247	A-70227-3146								24
26	15-47-8263	A-70227-3011	15-47-8264	A-70227-3045	15-47-8266	A-70227-3079			AX-70227-3113	15-47-8267	A-70227-3147								26
28	15-47-8283	A-70227-3012	15-47-8284	A-70227-3046	15-47-8286	A-70227-3080			AX-70227-3114	15-47-8287	A-70227-3148								28
30	15-47-8303	A-70227-3013	15-47-8304	A-70227-3047	15-47-8306	A-70227-3081			AX-70227-3115	15-47-8307	A-70227-3149								30
32	15-47-8323	A-70227-3014	15-47-8324	A-70227-3048	15-47-8326	A-70227-3082			AX-70227-3116	15-47-8327	A-70227-3150								32
34	15-47-8343	A-70227-3015	15-47-8344	A-70227-3049	15-47-8346	A-70227-3083	15-47-5348	A-70227-3117	15-47-8347	A-70227-3151									34
36	15-47-8363	A-70227-3016	15-47-8364	A-70227-3050	15-47-8366	A-70227-3084			AX-70227-3118	15-47-8367	A-70227-3152								36
38	15-47-8383	A-70227-3017	15-47-8384	A-70227-3051	15-47-8386	A-70227-3085			AX-70227-3119	15-47-8387	A-70227-3153								38
40	15-47-8403	A-70227-3018	15-47-8404	A-70227-3052	15-47-8406	A-70227-3086			AX-70227-3120	15-47-8407	A-70227-3154								40
42	15-47-8423	A-70227-3019	15-47-8424	A-70227-3053	15-47-8426	A-70227-3087			AX-70227-3121	15-47-8427	A-70227-3155								42
44	15-47-8443	A-70227-3020	15-47-8444	A-70227-3054	15-47-8446	A-70227-3088			AX-70227-3122	15-47-8447	A-70227-3156								44
46	15-47-8463	A-70227-3021	15-47-8464	A-70227-3055	15-47-8466	A-70227-3089			AX-70227-3123	15-47-8467	A-70227-3157								46
48	15-47-8483	A-70227-3022	15-47-8484	A-70227-3056	15-47-8486	A-70227-3090			AX-70227-3124	15-47-8487	A-70227-3158								48
50	15-47-8503	A-70227-3023	15-47-8504	A-70227-3057	15-47-8506	A-70227-3091			AX-70227-3125	15-47-8507	A-70227-3159								50
52	15-47-8523	A-70227-3024	15-47-8524	A-70227-3058	15-47-8526	A-70227-3092			AX-70227-3126	15-47-8527	A-70227-3160								52
54	15-47-8543	A-70227-3025	15-47-8544	A-70227-3059	15-47-8546	A-70227-3093			AX-70227-3127	15-47-8547	A-70227-3161								54
56	15-47-8563	A-70227-3026	15-47-8564	A-70227-3060	15-47-8566	A-70227-3094			AX-70227-3128	15-47-8567	A-70227-3162								56
58	15-47-8583	A-70227-3027	15-47-8584	A-70227-3061	15-47-8586	A-70227-3095			AX-70227-3129	15-47-8587	A-70227-3163								58
60	15-47-8603	A-70227-3028	15-47-8604	A-70227-3062	15-47-8606	A-70227-3096			AX-70227-3130	15-47-8607	A-70227-3164								60
62	15-47-8623	A-70227-3029	15-47-8624	A-70227-3063	15-47-8626	A-70227-3097			AX-70227-3131	15-47-8627	A-70227-3165								62
64	15-47-8643	A-70227-3030	15-47-8644	A-70227-3064	15-47-8646	A-70227-3098			AX-70227-3132	15-47-8647	A-70227-3166								64
66	15-47-8663	A-70227-3031	15-47-8664	A-70227-3065	15-47-8666	A-70227-3099			AX-70227-3133	15-47-8667	A-70227-3167								66
68	15-47-8683	A-70227-3032	15-47-8684	A-70227-3066	15-47-8686	A-70227-3100			AX-70227-3134	15-47-8687	A-70227-3168								68
70	15-47-8703	A-70227-3033	15-47-8704	A-70227-3067	15-47-8706	A-70227-3101			AX-70227-3135	15-47-8707	A-70227-3169								70
72	15-47-8723	A-70227-3034	15-47-8724	A-70227-3068	15-47-8726	A-70227-3102			AX-70227-3136	15-47-8727	A-70227-3170								72

REVISIONS	K	SEE SHEET I
	J1	SEE SHEET I
	J	SEE SHEET I
	HI	SEE SHEET I
	H	SEE SHEET I
	G	SEE SHEET I

DIMENSIONS SHOWN METRIC INCH		UNLESS OTHERWISE SPECIFIED	
INCH	METRIC	INCH	METRIC
1/16	1.5	1/8	3.175
1/8	3.175	1/4	6.35
1/4	6.35	3/8	9.525
3/8	9.525	1/2	12.7
1/2	12.7	5/8	15.875
5/8	15.875	3/4	19.05
3/4	19.05	7/8	22.225
7/8	22.225	1	25.4

TITLE: SALES ASSEMBLY  
 WAFER - VERT. MT - FULLY SHROUDED  
 .280 PCKET WITH .150 END WALLS  
 .100 GRID W/PEDS & .005 SQ./RD. PINS  
 MOLEX INCORPORATED  
 PART NO. 68032  
 DATE 12/07/09  
 SEE CHART SDA-70227-\*\*\*\*  
 THIS DRAWING CONTAINS INFORMATION THAT IS PROPRIETARY TO MOLEX  
 UNLESS OTHERWISE SPECIFIED IN THIS DRAWING